

PRODUCT INTRODUCTION

BiANCO NXT Summit Series Pressure Transducer Controlled units are an all-in-one solution offering a professional quality range of vertical multistage pumps, engineered for exceptional efficiency, durability and dependable performance.

Operation is controlled by a 4-20mA Pressure Transducer connected to a BiANCO NXT SPC (Single Pump Controller) allowing for precise digital pressure adjustment.

Versatile and cost-effective, SUMMIT SERIES VMS solutions are designed for performance, reliability and ease of use.

PUMP TECHNICAL DATA

RATED FLOW [M3/H]	4m3/hr
MAX FLOW	6m3/hr
MAX HEAD	78.7M
OPTIMUM OPERATING RANGE	2.41m3/hr @ 70.6m 39.7% eff
	5m3/hr @ 58.8m 54.4% eff
WORKING AIR TEMP	0°C - 40°C
LIQUID TEMPERATURE	-15°C - 120°C
HIGHEST EFFICIENCY	54.3%
MAXIMUM PUMP PRESSURE	33 bar
NET WEIGHT (KG)	31.2kg

RATED VOLTAGE/CURRENT	Single phase 230V +10% - 6%
RATED CURRENT	5.35 amps
CAPACITOR	30uF
POWER (KW)	1.5kW 2 pole
MOTOR IP RATING	IP55
MOTOR INSULATION	Class F
MOTOR EFFICIENCY STD	I.E.3
MOTOR EFFICIENCY	84.2%
COS Ø	0.84
MECHANICAL SEAL	AS-L-12
OUTLET DIN FLANGE	DN32

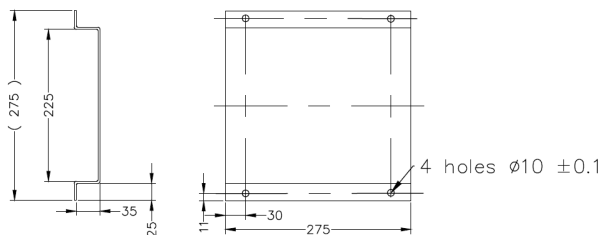
DEFAULT CUT OUT	7.1 bar
DEFAULT CUT IN	5.4 bar
OVERPRESSURE ALARM	7.7 bar



Image illustrative only

INCLUDES

- VMS Pump
- Galvanised single pump base
- Manifold (304 Stainless Steel)
- Stainless Steel Counter Flanges
- Gaskets to suit Counter Flanges
- Watermarked Spring Check Valve
- 304 SS Pressure side isolation Ball Valve
- 30 Bar Liquid Filled Pressure Gauge
- BPT-18 10 bar pressure tank with 304 SS 25mm isolating Ball Valve
- NXT SPC1-22 Control panel
- BIA VMS 10bar 4-20mA pressure transducer



Base 275 x 275mm x 35mm high

CONTROLLER DETAILS



The BiANCO NXT-SPC (Single Pump Controller) provides control and protection for an individual single phase pump.

The controller is simple to operate. The user not only enjoys superior control and protection of the pump but the user display provides user information about the running state of the system.

By digitally monitoring the running current, the response time of the BiANCO NXT SPC is superior to traditional analogue overload methods.

NXT-SPC has 2 x passive dry contacts and is equipped with a RS485 modbus interface to connect to a BMS

- Manual or Automatic operation
- NXT-SPC has an audible alarm and a flashing light to indicate an alarm state. It supports an external alarm unit
- Pump accumulated running time memory
- Pump start / stop delay time setting
- Last 5 error log

PROTECTION FUNCTIONS

Protection functions can be set, enabled or disabled independently

- Over voltage
- Under voltage
- Dry Run (under current)
- Overload (over current)
- Pump stall
- Open phase protection
- Pump 'Anti-seize' function (96 hr default)

CONTROL INPUT

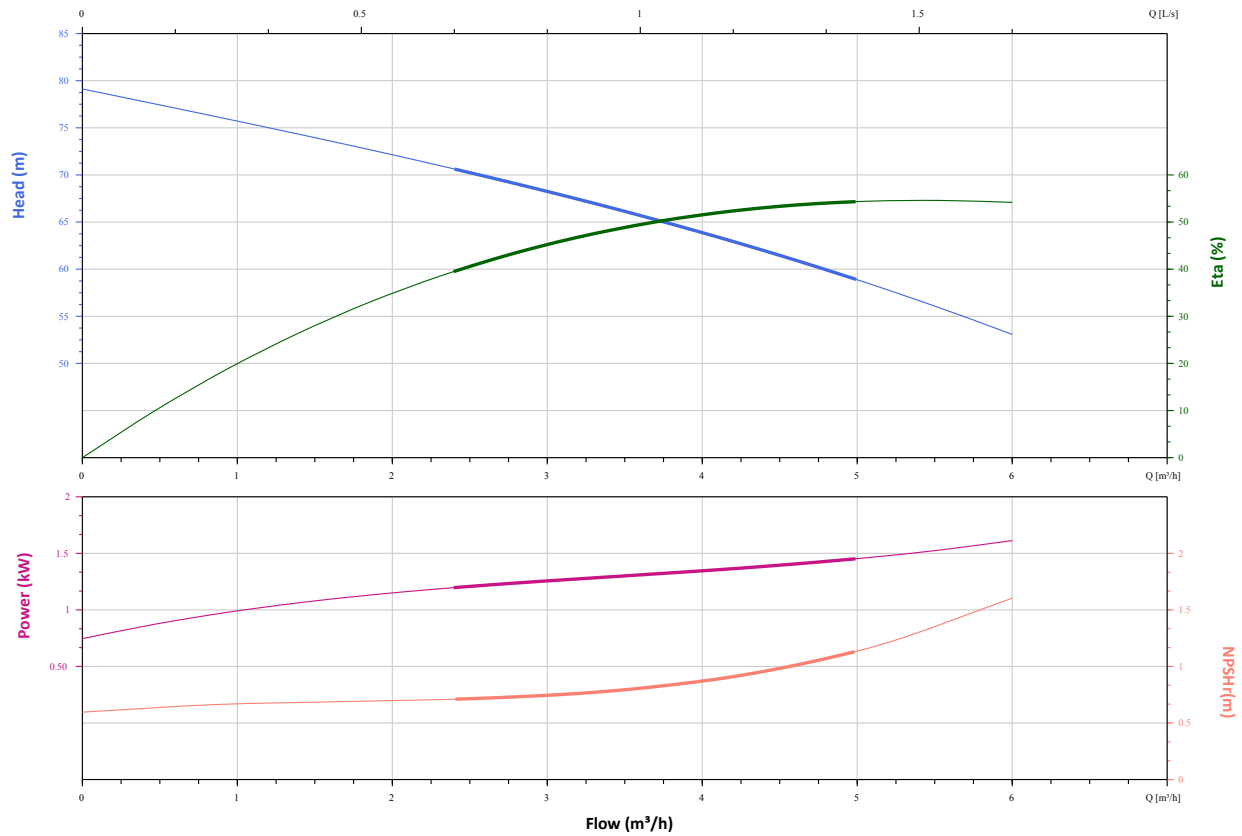
- 4-20mA level or pressure transmitter

TECHNICAL DATA

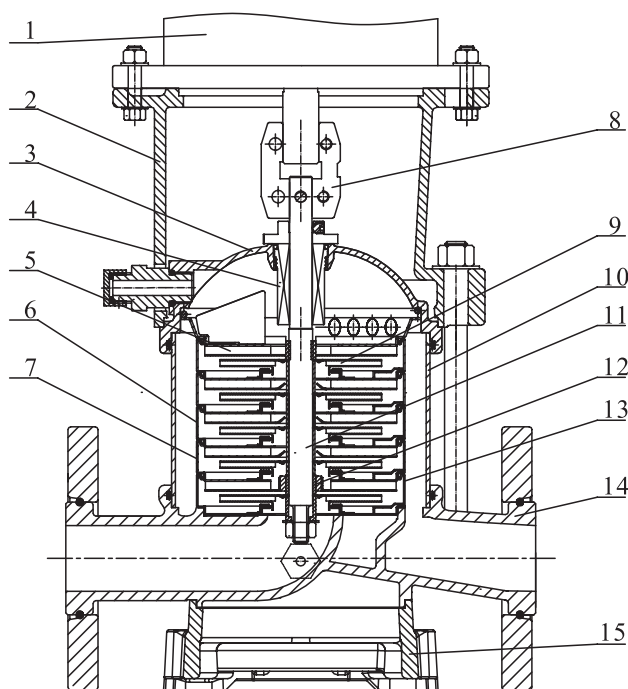
RATED VOLTAGE	1Ph 230V +10/-6%
MAX. AMPERAGE	18 amps
DEGREE OF PROTECTION	I.P. 65

WORKING HUMIDITY	20% - 90% RH
OPERATING TEMPERATURE	-25 degC to 55 deg C
UNIT DIMENSIONS	342mm x 253mm x 130mm

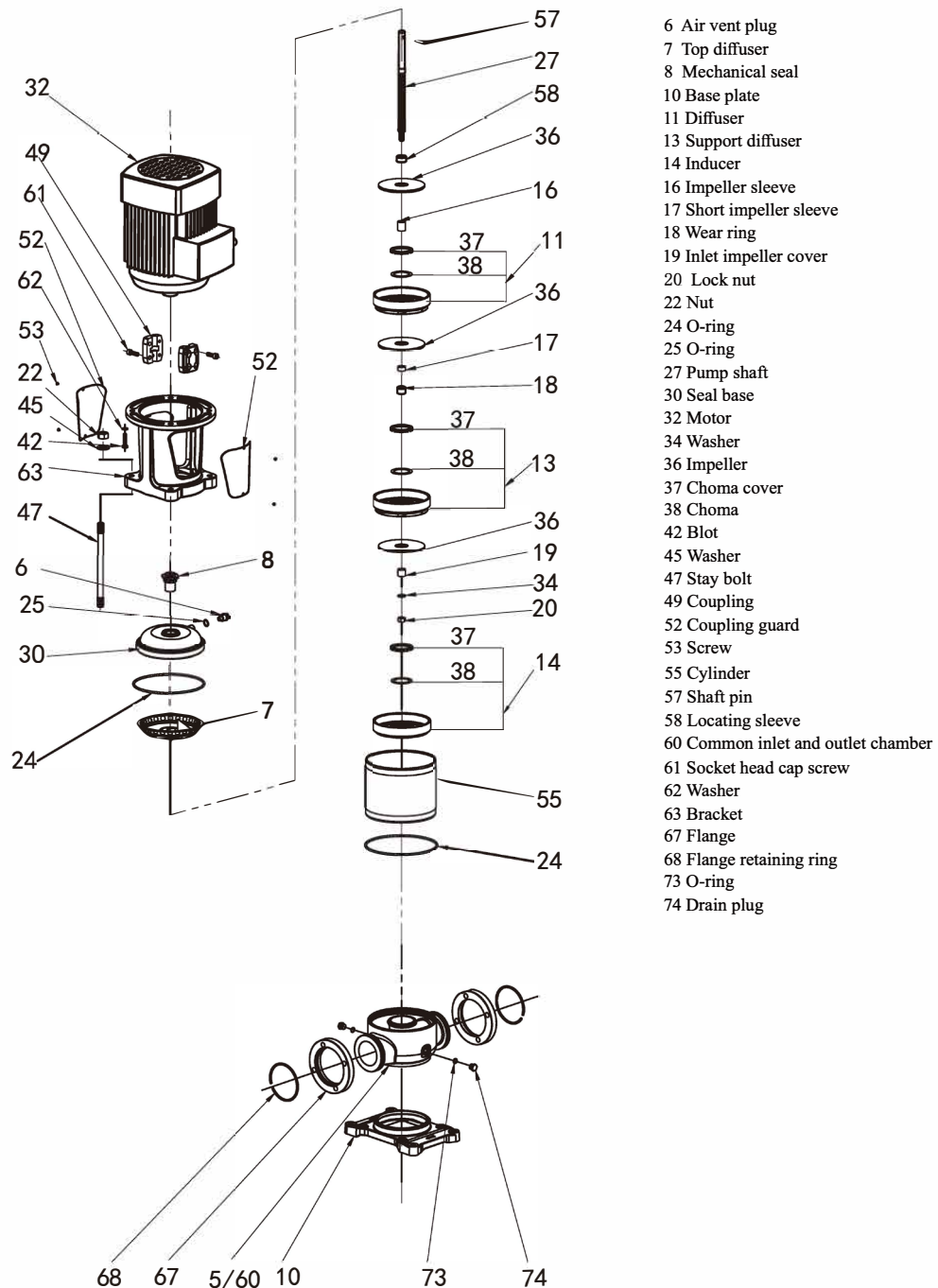
HYDRAULIC CURVE



CUTAWAY



1	Motor	/
2	Bracket	Ductile Cast Iron
3	Seal Base	Stainless / Ductile Cast Iron
4	Mechanical Seal	AS-L-16
5	Top Diffuser	Stainless Steel
6	Diffuser	Stainless Steel
7	Support Diffuser	Stainless Steel
8	Coupling	Stainless Steel
9	Impeller	Stainless Steel
10	Cylinder	Stainless Steel
11	Shaft	Stainless Steel
12	Intermediate Bearing	SIC / WC
13	Inducer	Stainless Steel
14	Inlet/Outlet Chamber	Stainless Steel / Ductile Cast Iron
15	Base	Ductile Cast Iron



WARRANTY / CERTIFICATIONS

